

THE
HYPNOTIC HUSH
COLLECTION

A SANCTUARY FOR INTROSPECTION; THE HYPNOTIC HUSH COLLECTION CELEBRATES TIMELESSNESS AND THE RESTORATIVE POWER OF CALM ENVIRONMENTS. HYPNOTIC HUSH ARTWORK ENCOURAGES THE VIEWER TO SLOW DOWN, PRESS PAUSE AND BE STILL WITH THE IMAGE.

#HYPNOTICHUSH

PI



THE
HYPNOTIC HUSH
COLLECTION



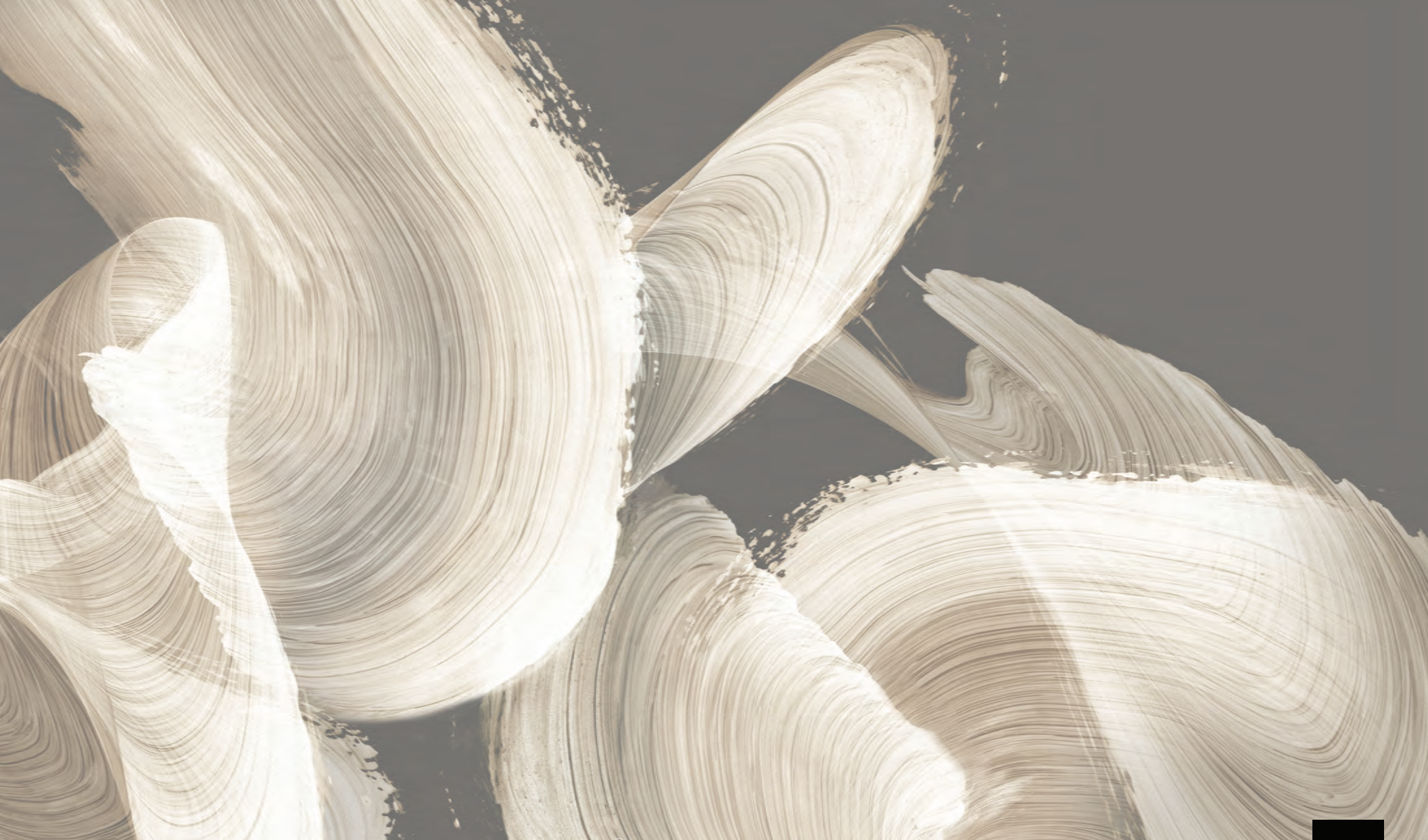
PRINT ON EZOBORD

At PI we love experimenting with different substrates to add fresh dynamic elements to your custom artwork. In this year's #HypnoticHush collection we created a custom printed EzoBord installation that was exhibited at The Boutique Design Fair in New York City.

EzoBord is a sustainable material that offers sound absorption and endless creative possibilities. The EzoBord panels are made of recycled water bottles and the scrap material is 100% recyclable and can be put back into the manufacturing process to create new fiber. There is essentially no waste in producing an EzoBord panel!

We can print anything on EzoBord panels and cut the pieces into unique shapes. It's a very lightweight material, so it's easy to install as well!

#HYPNOTICHUSH



EVOLUTION OF WHITE • CREATED IN #PIFASTUDIO • IMAGE CODE: PI658-A





#HYPNOTICHUSH

ARTIST FEATURE

ROD MIREAU



Rod Mireau (b. Saskatchewan, 1971) incorporates reclaimed wood and hardware to create “forms on the edge of recognition, forms that conjure a space between fact and fiction, past and present.” Using traditional and experimental woodworking techniques he constructs large scale sculptures that hint at contemporary narratives.

Mireau's work is held in private and corporate collections including Holt Renfrew in Vancouver, Four Seasons in Dubai, William Vale Hotel in New York, Ron Joyce Children's Hospital in Hamilton, and several Toronto condominiums including Pier 27, Tea House and Pears Avenue.



THE
HYPNOTIC HUSH
COLLECTION

New Wallcovering Design by Vicki McFarland
Emerging Gold I • Image Code: VF107-W





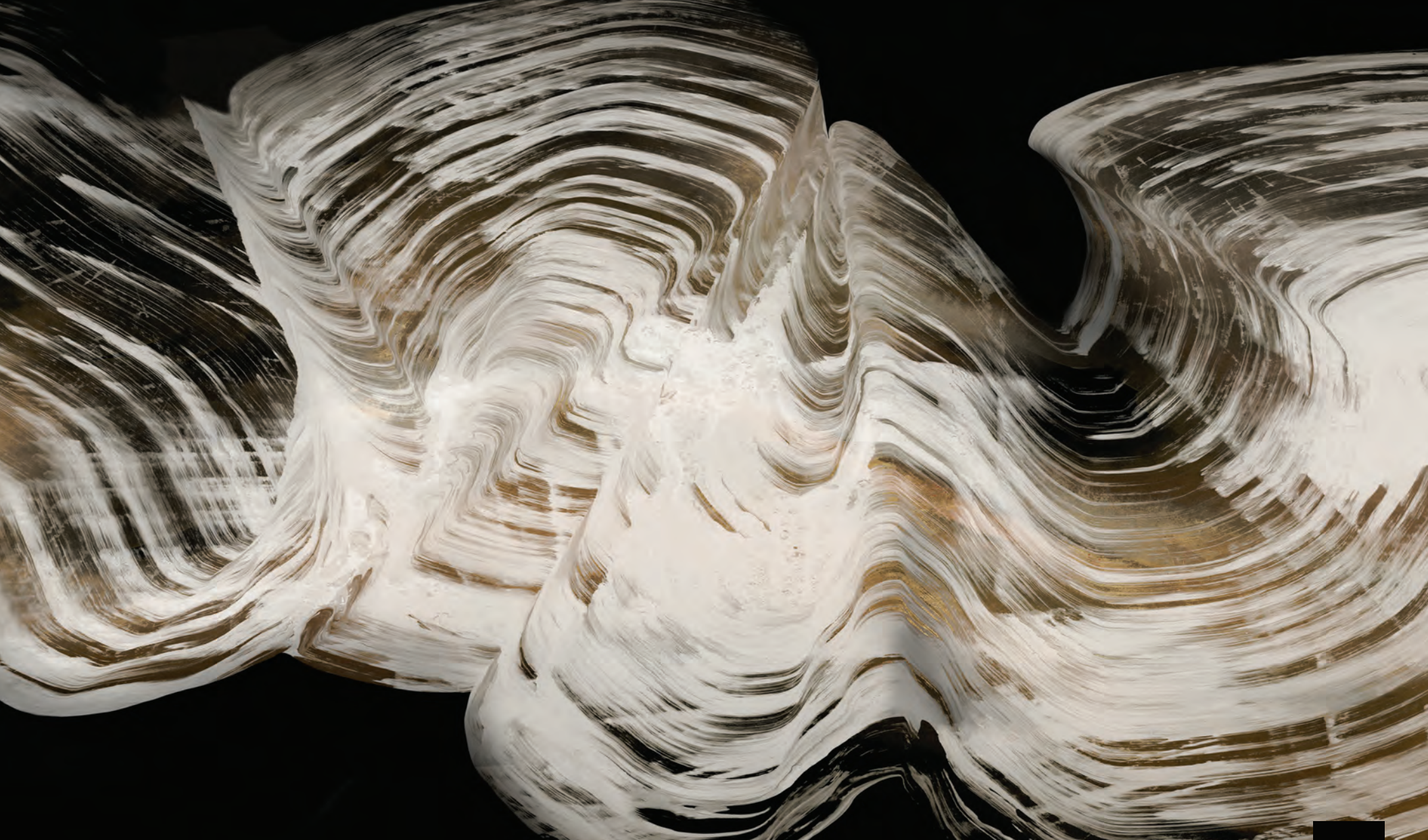
ARTIST FEATURE

VICKI MCFARLAND

“When designing, the negative (white) space is equally as important to me as the colors I select. Knowing the direction and the scale of the flow sets the theme of the piece. After the first pour, I construct the composition from there”.

Vicki McFarland explores, with her unusual pouring technique, a dialog with colors, shapes and angles. Intuitive, by nature, she creates work that evokes an emotional response in her viewers. She is guided often by her choice of music in her studio. We can readily see the six elements of music, rhythm, dynamics, melody (the theme), tone, texture and form that are masterfully interpreted on her canvases. Typically, she will pick a song and let the rhythm become part of the design process.

‘EMERGING GOLD I’ WALLCOVERING APPLIED TO LAYERED CANVAS, AS SEEN AT #BDNY2022

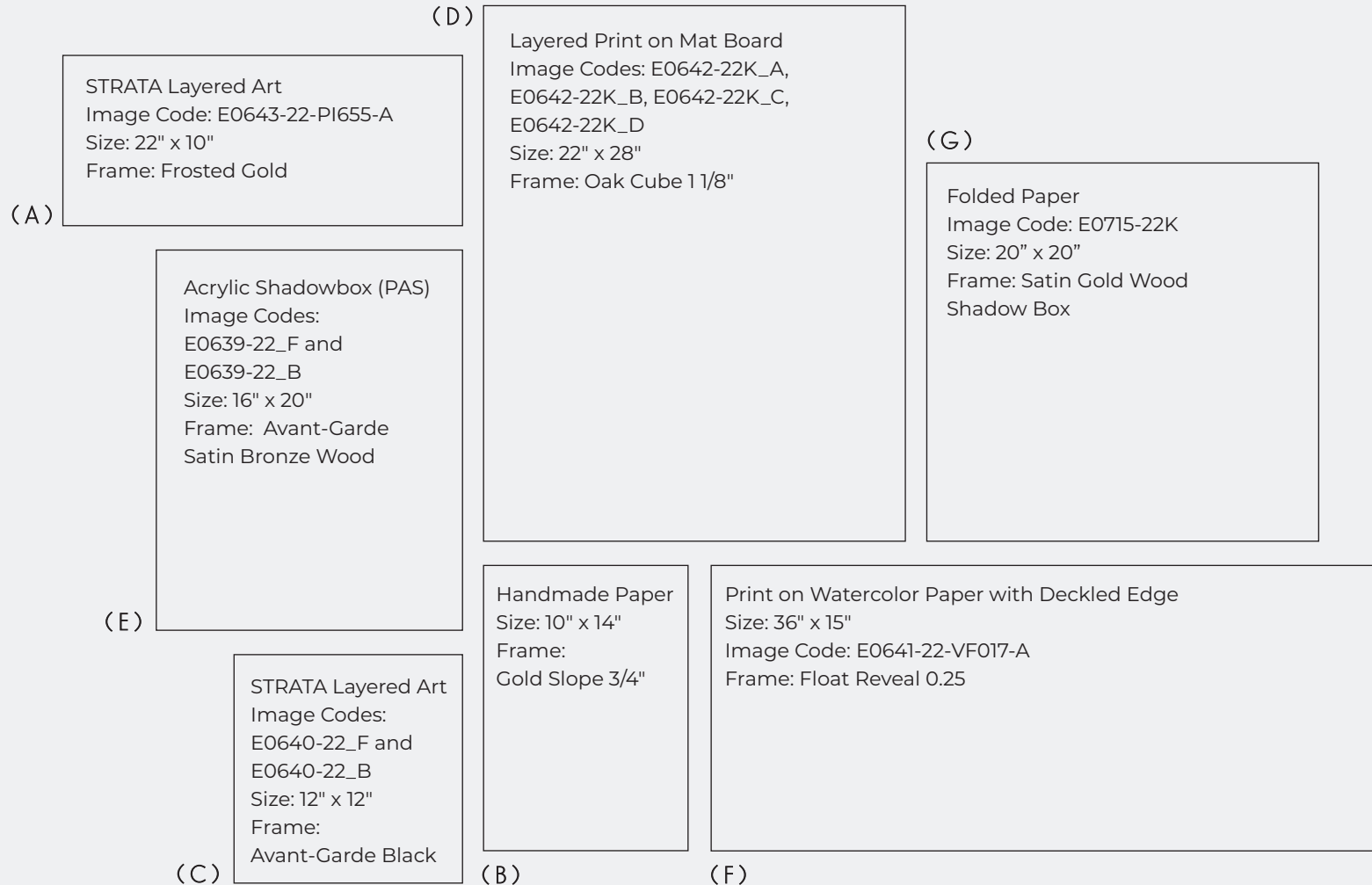


WHITE STROKES · CREATED IN #PIFASTUDIO · IMAGE CODE: PI657-A



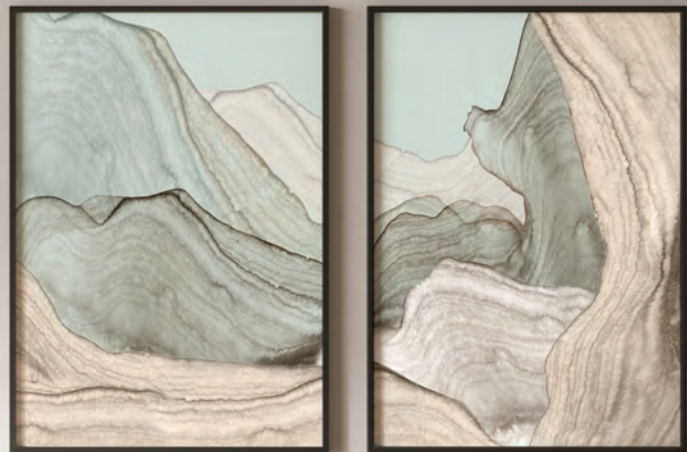


THE GALLERY WALL OF CUSTOM FRAMED ARTWORK, AS SEEN AT #BDNY2022



THE HYPNOTIC HUSH

Trend



A sanctuary for introspection; The *Hypnotic Hush* Collection celebrates timelessness and the restorative power of calm environments. *Hypnotic Hush* artwork encourages the viewer to slow down, press pause and be still with the image.



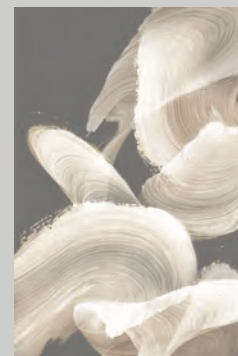
OR567-A



PI602-A



PI740-A



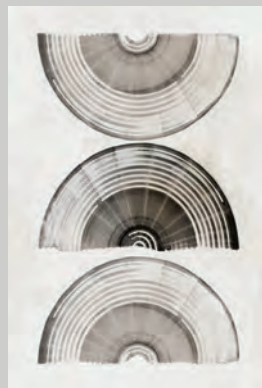
PI658-A



PI709-A



PI654-A



PI655-A



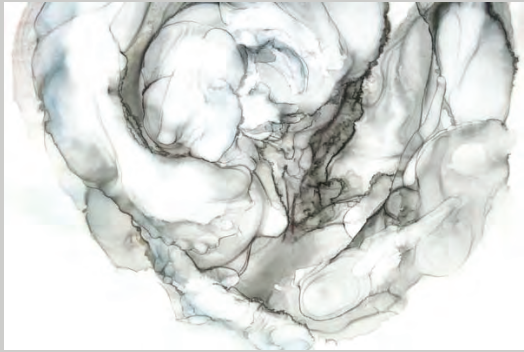
PI657-A



PI824-A



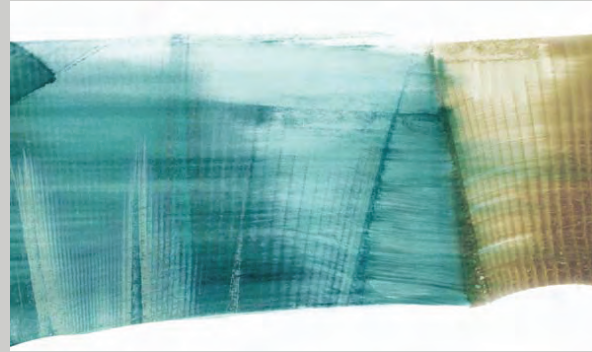
PI833-X



KJ099-A



VF032-A



PI858-X



PI717-A



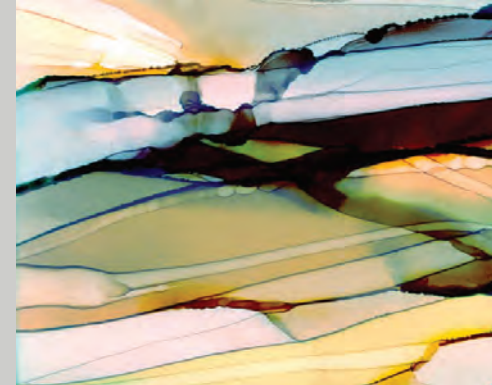
VF016-A



WK147-A



BY001-A



WK154-A

All the featured images are available for customization in color and size. Simply highlight your favorite's in this PDF, then send it over to us, with more details about your project. We can then begin the custom art development!

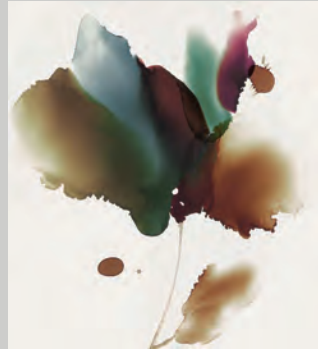




UL093-A



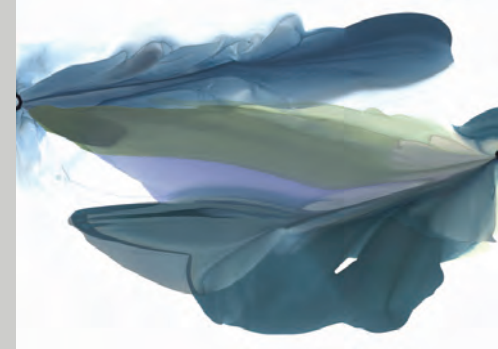
PI864-X



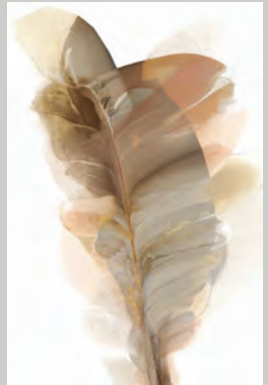
PI621-A



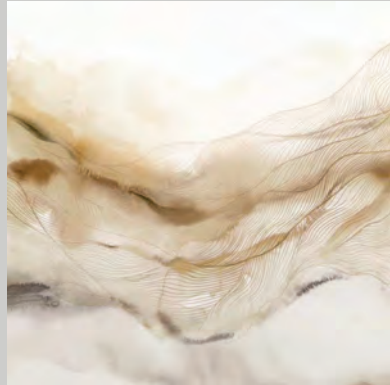
LM125-A



VF027-A



VF015-A



EZ977-A



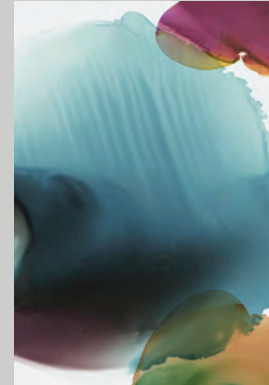
VF018-A



RF433-A



PI871-X



PI598-A



THE
HYPNOTIC HUSH
COLLECTION

PIFINEART.COM • @PIFINEART
INFO@PIFINEART.COM

#HYPNOTICHUSH

